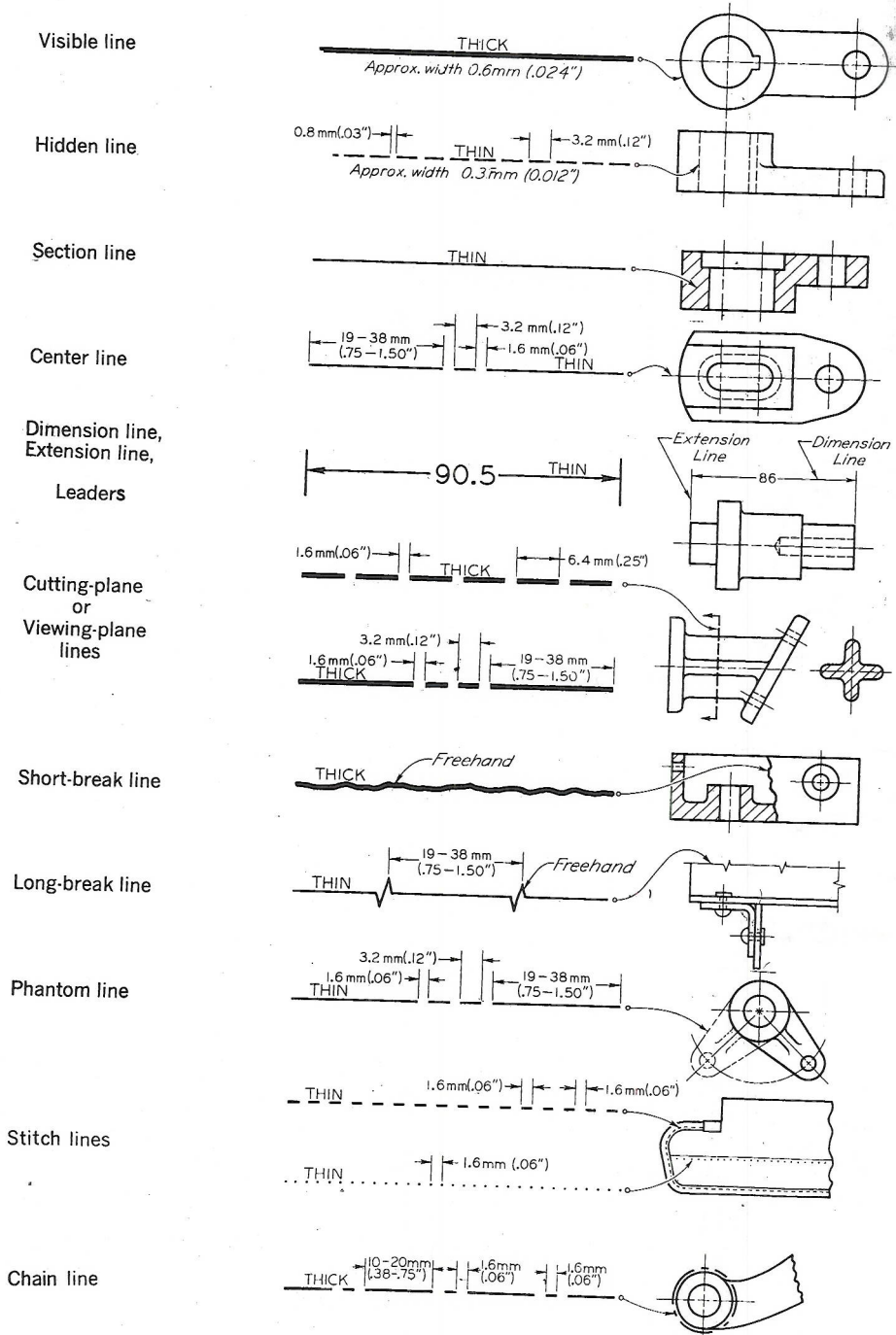


3.6 ■ STYLES OF LINES

Each line on a technical drawing has a definite meaning. Drawings use two different line widths—thick and thin—and different line styles indicate the meaning of the line. A person reading a drawing depends on line styles to communicate whether a line is visible or hidden, if it represents a center axis, or if its purpose is to convey dimension information. Without making these

distinctions, drawings would become a confusing jumble of lines. To make your drawings clear and easy to read, make the contrast between the two widths of lines distinct. Thick lines such as visible lines and cutting plane lines should be twice as thick as thin lines. Thin lines are used for construction lines, hidden lines, dimension lines, extension lines, center lines, and phantom lines. Figure 3.6 shows the different styles of lines



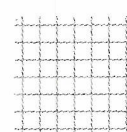
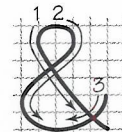
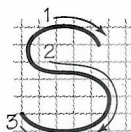
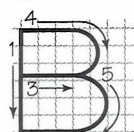
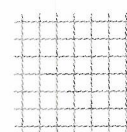
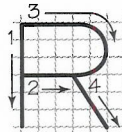
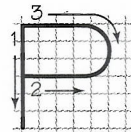
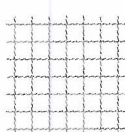
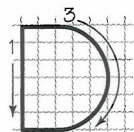
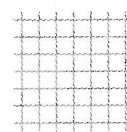
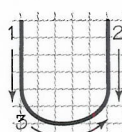
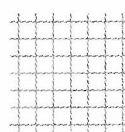
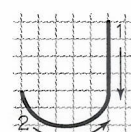
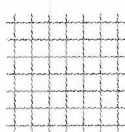
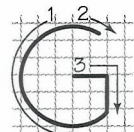
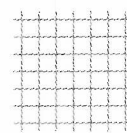
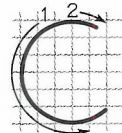
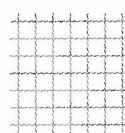
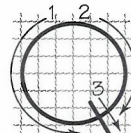
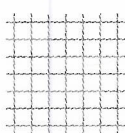
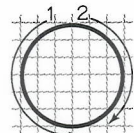
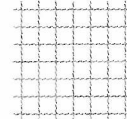
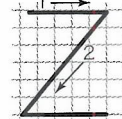
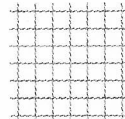
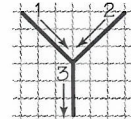
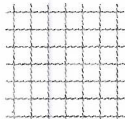
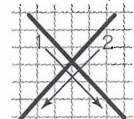
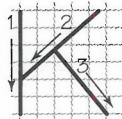
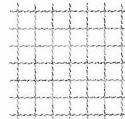
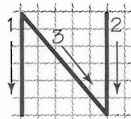
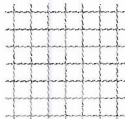
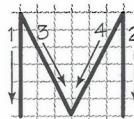
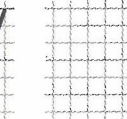
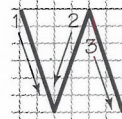
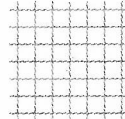
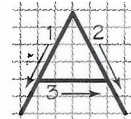
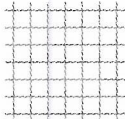
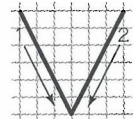
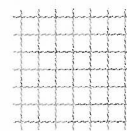
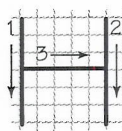
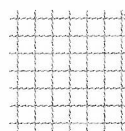
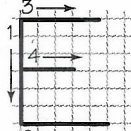
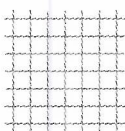
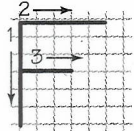
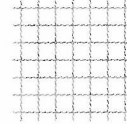
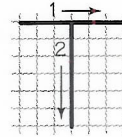
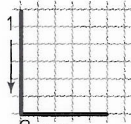
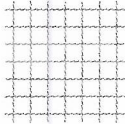
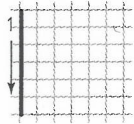
■ FIGURE 3.6 ■ Alphabet of Lines (Full Size).



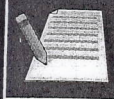
Worksheet 3.5

Vertical lettering practice

Repeat each letter on the blue grid provided, paying careful attention to the proportions and stroke direction shown in the example. Then repeat the letter once more in the white space.



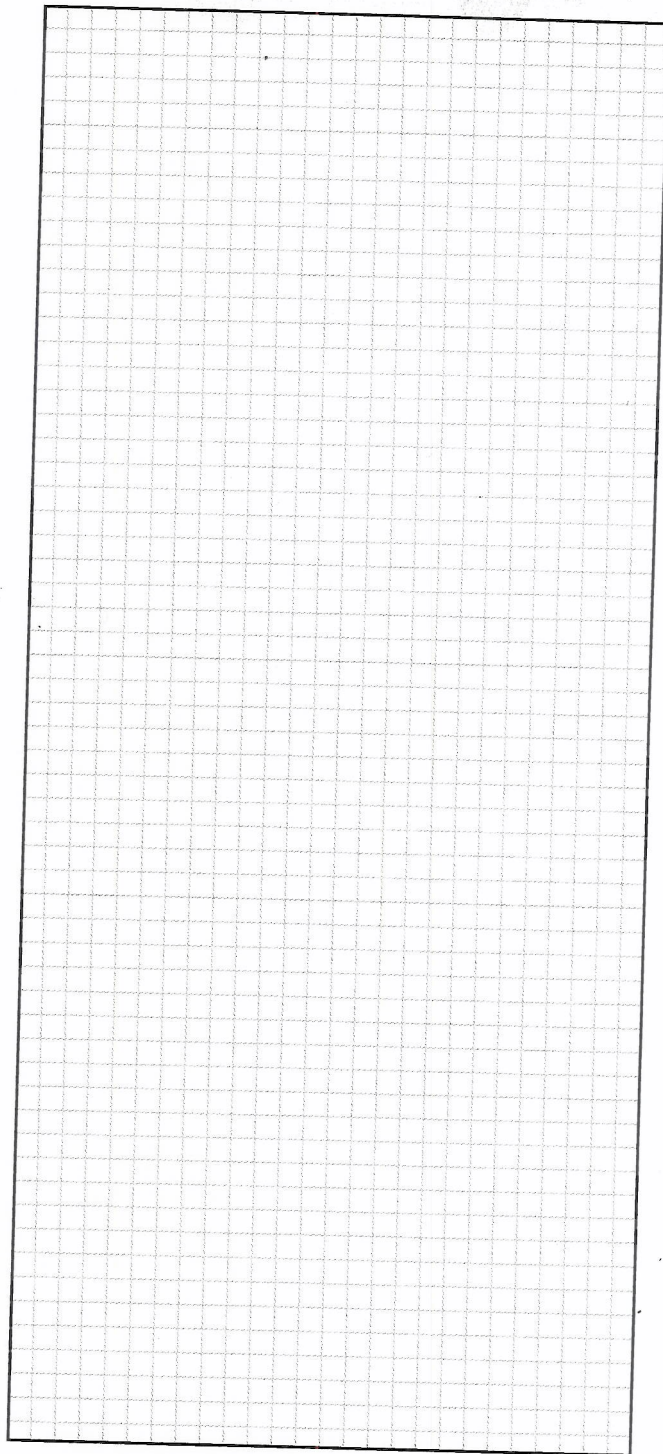
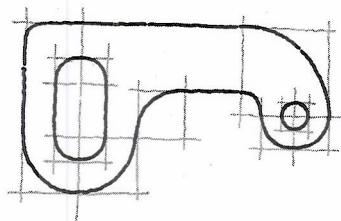
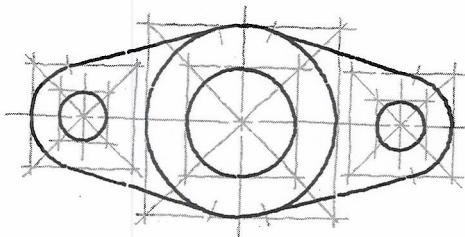
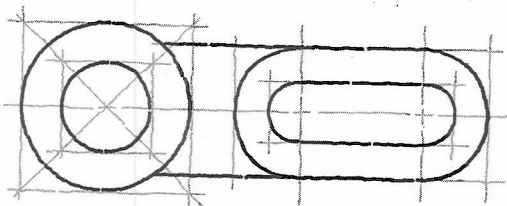
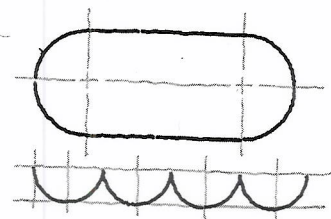
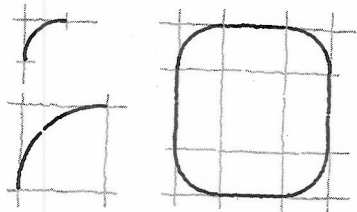
Make copies of these pages to use for additional practice.



Worksheet 3.3

Practice line and curve technique

Sketch the figures below on the grid provided.



Make copies of these pages to use for additional practice.